

CERTIFICATE OF LOCATION OF GOVERNMENT CORNER

NORTHEAST Corner of Section 5, Township 107 N, Range 40 W, 5th P.M.

STATE OF MINNESOTA, County of MURRAY

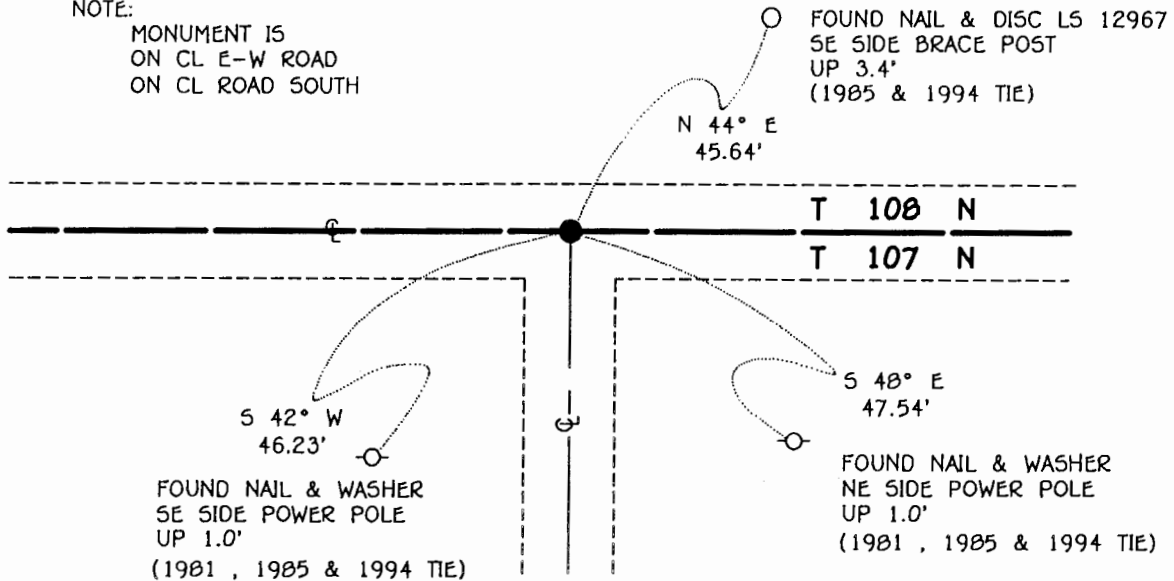
At the corner location shown on the sketch:

- On 7-2-97 found a 14" x 18" BLUE GRANITE STONE WITH ROUNDED TOP,
DATE DOWN 1.8'
- left monument as found, lowered monument, removed manument (explain)
- On 7-2-97 Placed a 3/4" x 12" REBAR WITH ALUMINUM CAP STAMPED
DATE "DNR SURVEY MARKER", DOWN 0.5', OVER TOP CENTER OF STONE

SKETCH OF REFERENCE TIES



NOTE:
MONUMENT IS
ON CL E-W ROAD
ON CL ROAD SOUTH



1983 MURRAY COUNTY
COORDINATE SYSTEM
N = 195174.782
E = 527072.088

BEARINGS OBSERVED WITH COMPASS

Statement of evidence relative to this corner location is on back of page.

JBM JUL '97
WAS01442

I hereby certify that this document and the data contained herein was prepared by me or under my direct supervision.

Bruce W. Shippel 4/20/98
SIGNATURE DATE

License Number 17003

- Land Surveyor, Professional Engineer
- County Surveyor, County Engineer

OFFICE OF THE COUNTY RECORDER
County of MURRAY MAY 28 1998

I hereby certify that this document was filed in the Co. recorders office at _____ .M. on the _____ day of _____ A.D., 19____

County Recorder James V. Johnson
By _____, Deputy

DOCUMENT NO. _____

The DNR Bureau of Engineering contacted the following for survey information:

Minnesota Secretary of State's Office
Murray County Recorder's Office
Murray County Highway Engineer's Office
Lyle Moseng Land Surveying of Marshall
Rieke Carroll Muller Associates of Gaylord
Madsen Land Surveying, Inc. of Fairmont

1861 U.S. General Land Office notes obtained from the Secretary of State's Office show the corner marked with a wood post and a charred stake in a mound of earth and sod with trench and pits as per instructions. The following bearing tree was marked:

15" W. Oak, North 50° West, 17.07 chains (1126.62 feet)

No Surveyor's Record Book A, page 21, obtained from the County Recorder's Office, contains a road survey, surveyor not indicated. Survey shows corner but a description of what was found or set is not given and no distances are shown to it.

1906 Plat of Subdivision of the East Half of the Southeast Quarter of Section 32, Township 108, Range 40 obtained from the County Surveyor's Office, by J.W. Woolstencroft, County Surveyor, states that a stake was driven at this corner (southeast corner of Sublot "1").

1913 October, Surveyor's Record Book A, page 235, obtained from the County Recorder's Office, contains a survey by J.W. Woolstencroft. Survey shows a blue stone in grade at corner but does not indicate if it was found or set.

1936 A map obtained from the National Park Service shows a stone at corner but does not indicate if it was found or set. The corner is shown:
in line with the center line of road south

1966 July, DNR Bureau of Engineering contracted N.C. Hoium and Associates Inc. of Coon Rapids, Minnesota, to survey property in Lake Shetek State Park. The DNR Bureau of Engineering's records of survey show that a 5 foot by 5 foot by 1.5 foot deep hole was dug the center being at the intersection of the center line of roads east, west and south. A monument was not found in excavated area.

1967 April, DNR Bureau of Engineering contracted N.C. Hoium and Associates Inc. of Coon Rapids, Minnesota, to survey property in Lake Shetek State Park. The DNR Bureau of Engineering's records of survey show that corner was established from fences and evidence by Kosak, a resident of area for 46 years, a ½ inch diameter rod was set to mark corner and the following ties were taken:

33 feet south of an old east-west right-of-way fence
in line with the center line of road south
5 feet north of the center line of an east-west road
guy pole #868B, northeast, 39.45 feet
telephone pole, northeast, 40.21 feet
power pole #868, southeast, 48.71 feet
telephone pole, southwest, 64.25 feet
power pole #868A, southwest, 52.55 feet

- 1981 McCombs-Knutson Associates, Inc. of Hutchinson, Minnesota, sent the DNR Bureau of Engineering the following information about corner:
found a steel pin which was set in 1974 by the County Highway Department over a found stone
The following ties are shown to corner:
at intersection of roads
nail and disc in power pole, southwest, 50.70 feet
nail and disc in power pole, southeast, 43.25 feet
- 1985 January, a worksheet for a survey in the Northeast Quarter of Section 33 and field notes by Gary D. Martin, RLS #12967, obtained from Madsen Land Surveying Inc. show that a 1/2 inch smooth bar over a stone was found at corner. The following ties are shown to corner:
5307.07 feet from the northeast corner of Section 4
in line with the center line of township road south
5 feet north of the center line of an east-west township road
brass tag in power pole, southwest, 52.38 feet
brass tag in power pole, southeast, 48.95 feet
brass tag in power pole, northeast, 39.36 feet
- 1994 April, a Certificate of Survey and a tie page from a field note book obtained from Madsen Land Surveying Inc. show that a 5/8 inch diameter rod was found down 24 inches at corner. A 3/4 inch outside diameter by 24 inch long iron pipe was set over the found rod and the following ties were taken:
in line with the center line of road south
5 feet north of the center line of an east-west road
brass tag in power pole, northeast, 39.25 feet
brass tag in power pole, southeast, 48.85 feet
object (no description), southwest, 52.70 feet
- 1997 July 2, DNR Bureau of Engineering found a 1/2 inch diameter by 23 1/2 inch long iron pipe down 0.4 of a foot over a 3/4 inch diameter by 30 1/2 inch long iron rod down 2.0 feet in area of corner. The irons were found to be:
5 feet north of the center line of an east-west road
3 feet east of the center line of road south
Hired a backhoe and excavated in area of corner and found a 14 inch by 18 inch blue granite stone with a rounded top down 1.8 feet. The stone was found to be:
5.33 feet south 3.80 feet west of the found irons
at the intersection of the center line of roads east, west and south
Searched for and found record ties as shown on sketch of reference ties.

Analysis of the above information led the DNR Bureau of Engineering to conclude that the found blue granite stone which dates back to 1913 marks the location of the corner. Set a 3/4 inch diameter by 24 inch long rebar down 2.4 feet, 1.0 feet east of the top center of the stone. Also, set a DNR Survey Marker over the top center of the stone. Discarded the found irons.